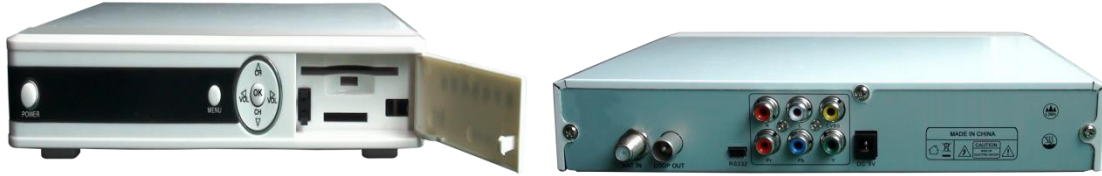


DVB-C MPEG2 SD SET TOP BOX



Key Features

- CAS integrated
- Fully DVB-C/MPEG-2 compliant
- MPEG-2 SD decoding (MP@ML)
- Novel-Supertv decoding system embedded
- Simultaneous viewing of one channel and recording it
- One touch record scheduling in EPG
- Support NIT auto search, list search, manual search
- Powerful program management feature and level restriction features for parental locking
- Support EPG Classified management
- 7 days Electronic Program Guide (EPG)
- Closed Caption, Teletext output with OSD
- Logical channel number (LCN) Supported
- 1 Smart Card embedded
- Software Upgrade via OTA & serial connection (RS-232C)
- Standby consumption less than 1W (True Standby)

Specifications

System Resources

CPU	GX3001Q, 300 MHz
Flash	16Mbit
DDR	128Mbit

Tuner& Demodulator

Tuner	NXP18520 (On board)
Constellation	16/32/64/128/256QAM
Frequency Range	47MHZ-862MHZ

Sensitivity	35dB μ V-80dB μ V
C/N	\leq 23dB (64QAM, 6.952 Mbaud)
Frequency Catch Range	\pm 150kHz
Input reflect loss	\geq 8dB
Symbol Rate	3.6 ~ 6.952 Mbaud
Input Impedance	75 Ω

Video Decoder

standard	MPEG-2 MP@ML MPEG-1
Resolution	720 \times 576(PAL), 720 \times 480(NTSC)
Output	CVBS/Y PbPr Component in RCA
Input Impedance	75 Ω
Aspect Ratio	4:3/16:9 (auto)

Audio Decoder

standard	MPEG-1, MPEG-2 Layer-I/II, MP3
Mode	Single / Dual mono / Stereo / Joint Stereo
Sampling Rate	32KHZ, 44.1KHZ, 48KHZ
Output	RCA
Output Impedance	600 Ω

General

Smart Card	1pc cater for ISO7816 standard
Power supply	AC100~240V,48~52HZ
Power consumption	<5W
Holding consumption	<1W
Anti-electricity durance	3000V(AC spot value)keep 1 min not breakdown
Operation temperature	0~40 $^{\circ}$ C